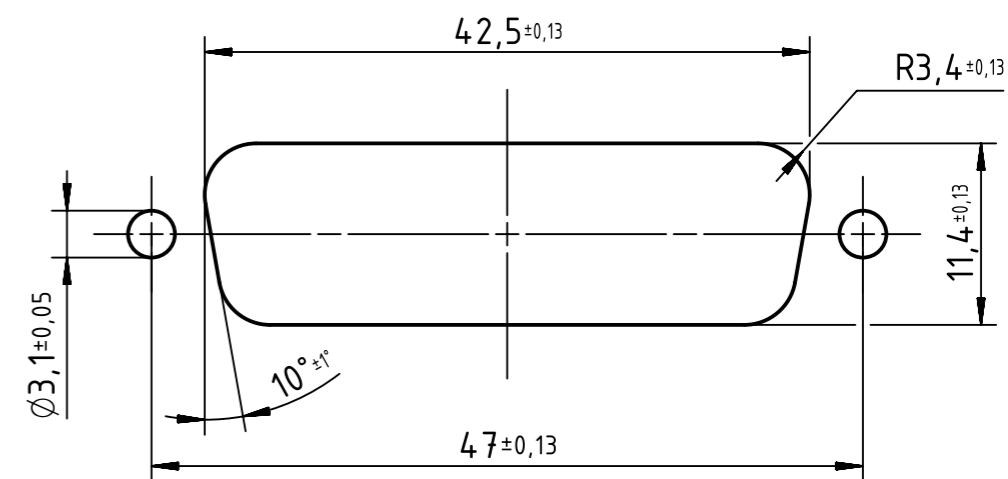
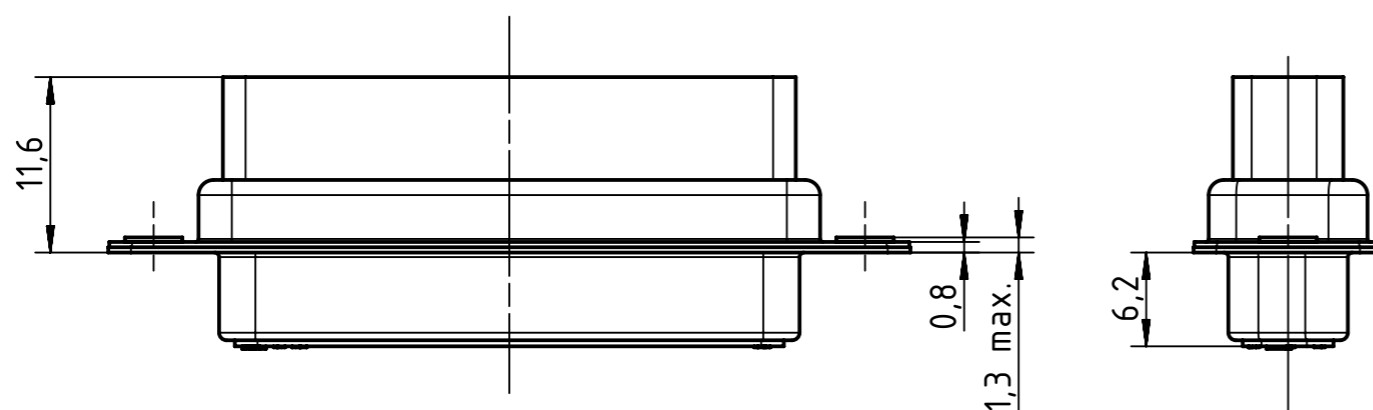
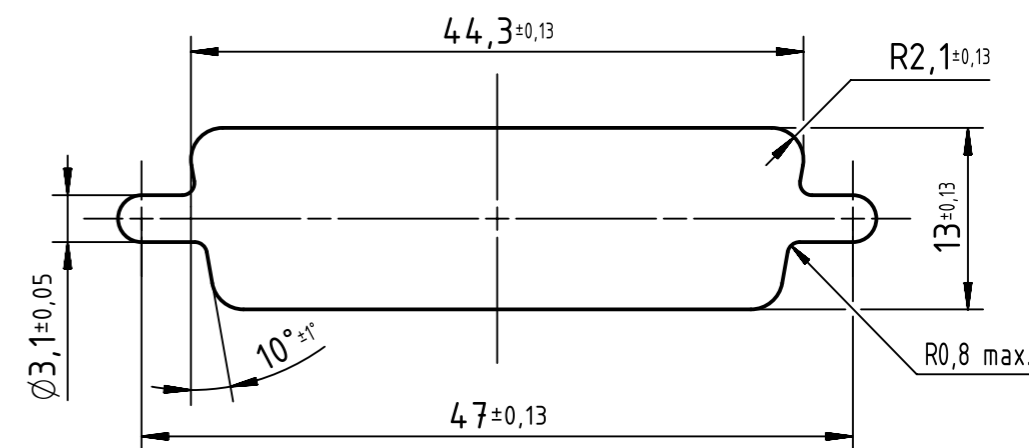
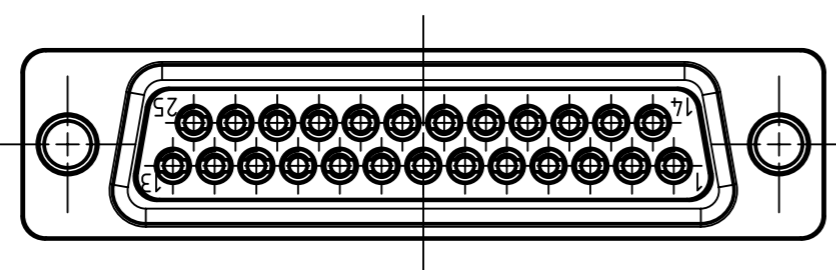


Rear mounting panel cut out
Montageausschnitt bei rückseitigem Einbau



Front mounting panel cut out
Montageausschnitt bei Frontmontage



D-Sub 25-pol. Buchsenleiste für Crimpkontakte

	All Dimensions in mm Original Size DIN A3		Scale 2:1	Free size tol.		Ref.	
	All rights reserved Department EC PD - CN		Created by ZENG D	Inspected by LUOK	Standardisation HOFFMANN	Date 2018-04-09	State Final Release
HARTING Electronics GmbH D-32339 Espelkamp		Title D-Sub crimp 25-pole female assembly				Doc-Key / ECM-Nr. 100235542/UGD/002/C 500000133025	
		Type TB	Number 09670254701		Rev. C	Page 1/1	