

TECHNISCHE DATEN:

Aufbau

Verschlusschraube Polyamid PA6 V-2
 Anschlussgewinde-
 Dichtring Chloroprenkautschuk CR
 Anschlussgewinde metrisch

Eigenschaften

- zum sicheren Verschließen einer nicht benutzten Gewinde- oder Durchgangsbohrung

Temperaturbereich -40 °C / +100 °C
 Schutzart IP66 / IP68 - 5 bar
 Type 4X
 Prüfnorm UL 514B
 UL / CSA-File E140310

TECHNICAL DATA:

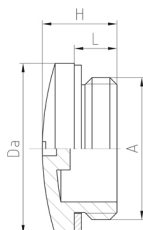
Configuration

Screw plug Polyamide PA6 V-2
 Sealing ring for
 connecting thread Chloroprene rubber CR
 Connecting thread metric

Properties

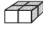



- for secure sealing of unused threaded or clearance hole

Temperature range -40 °C / +100 °C
 Protection grade IP66 / IP68 - 5 bar
 Type 4X
 Test standard UL 514B
 UL / CSA-File E140310



Merkmale

Characteristics

A	L mm	H mm	Da mm		 RAL 7001 silbergrau silver grey Art.-Nr. / Part No.	 RAL 7035 lichtgrau light grey Art.-Nr. / Part No.	 RAL 9005 tiefschwarz jet black Art.-Nr. / Part No.
M12x1,5	6	10	15	100	10.1215 PAV	10.1215 PAV7035	10.1215 PAVSW
M16x1,5	6	10,5	20	100	10.1615 PAV	10.1615 PAV7035	10.1615 PAVSW
M20x1,5	6	10,5	24	100	10.2015 PAV	10.2015 PAV7035	10.2015 PAVSW
M25x1,5	8	13	30	100	10.2515 PAV	10.2515 PAV7035	10.2515 PAVSW
M32x1,5	8	13,5	37	100	10.3215 PAV	10.3215 PAV7035	10.3215 PAVSW
M40x1,5	8	14	46	50	10.4015 PAV	10.4015 PAV7035	10.4015 PAVSW
M50x1,5	10	16,5	56	50	10.5015 PAV	10.5015 PAV7035	10.5015 PAVSW
M63x1,5	12	17	70	50	10.6315 PAV	10.6315 PAV7035	10.6315 PAVSW