



# SERIES 1065 – MICRO-SIGNAL SWITCH

DIAGNOSTICS CAPABILITY



## ADVANTAGE

- High level of flexibility
- High level of tolerance in use
- Suitable for acoustically sensitive areas
- High level of safety and reliability
- Suitable for harsh environment
- Numerous versions

## PRODUCT FEATURUES

- Change-over, diagnostics capability, center-off-version
- Large overtravel to adapt mechanical tolerances of periphery
- Noiseless switching system
- Redundant contact system for high switching reliability by double contacting, self-cleaning contact system due to wiping contacting
- Dust and water protection up to IP 67
- Different versions available regarding fastening pins, lever forms, customized cable assembly

## EXAMPLES OF APPLICATION

- Automotive applications
  - Locking systems (rotary latches, pawls, cinching, key cylinder controls etc.)
  - Seat applications
  - Convertible top applications
  - Cockpits
- Off-road vehicles
- Heating- and climatic controls
- Lawn and garden appliances
- Security technology
- Industrial applications


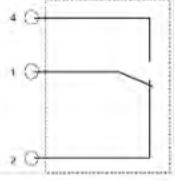

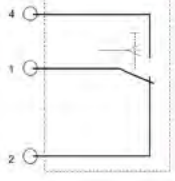

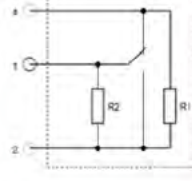
Mechanical life endurance	200E3
Electrical life endurance	14 V DC 10 mA ≥ 200E3 30 V DC 100 mA ≥ 40E3
Contact resistance (new condition)	500 mOhm
Contact resistance (after lifetime)	1 Ohm
Insulation resistance (new condition)	> 100 mOhm (500 V DC)
Switching voltage	5 – 30 V DC
Switching current	1 – 100 mA
Actuating angle (see specification)	≤ 40°
Protection type	
→ Actuator and switch system of all basic types	IP 67
→ Terminal basic type 1065 (or 1060, 1070 and 1075)	IP 00
→ Terminal basic type 1068 (or 1062, 1072 and 1078)	IP 67
Ambient temperature	-40 °C ... +85 °C



# SERIES 1065 – MICRO-SIGNAL SWITCH

DIAGNOSTICS CAPABILITY

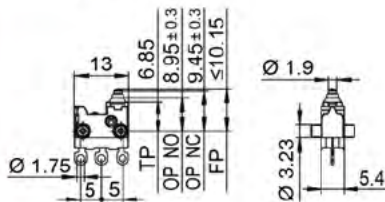
## VARIANTS

Basic type 1065	Center-Off-Switch 1075	Diagnostics capable switch 1060/1070
 <p>→ Normally closed / open or change-over version</p> 	 <p>→ Two normally open functions from center position → Three switching positions</p> 	 <p>→ Micro-signal switch with circuit monitoring (e. g. short circuit or cable break) → Three switching positions</p> 
<p>→ Flexible adaption: long overtravel &gt; 1,8 mm to adapt mechanical tolerances of periphery</p>	<p>→ Cost reduction &gt; 50 % → Save space due to omission of one switch → Optional with diagnostics capability</p>	<p>→ Cost and space reduced due to integrated resistors → Increased safety due to diagnostics capability → Wire harness cost saving due to saving one cable by change-over</p>

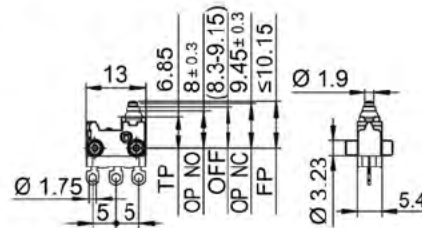
## DRAWINGS

(Dimensions in mm)

### Basic type 1065



### Center-Off-Switch 1075



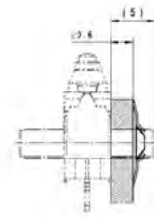
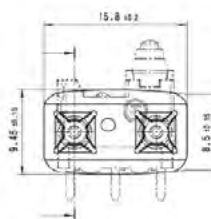
## INSTALLATION SOLUTIONS

Examples of installation:



Fastening disc:

→ Flexible and easy assembling; standard process and standard product



# MARQUARDT

Marquardt GmbH • Schloss-Straße 16 • 78604 Rietheim-Weilheim • Germany

Phone +49 (0) 74 24 / 99-0 • Fax +49 (0) 74 24 / 99-23 99 • [marquardt@marquardt.de](mailto:marquardt@marquardt.de) • [www.marquardt.com](http://www.marquardt.com)