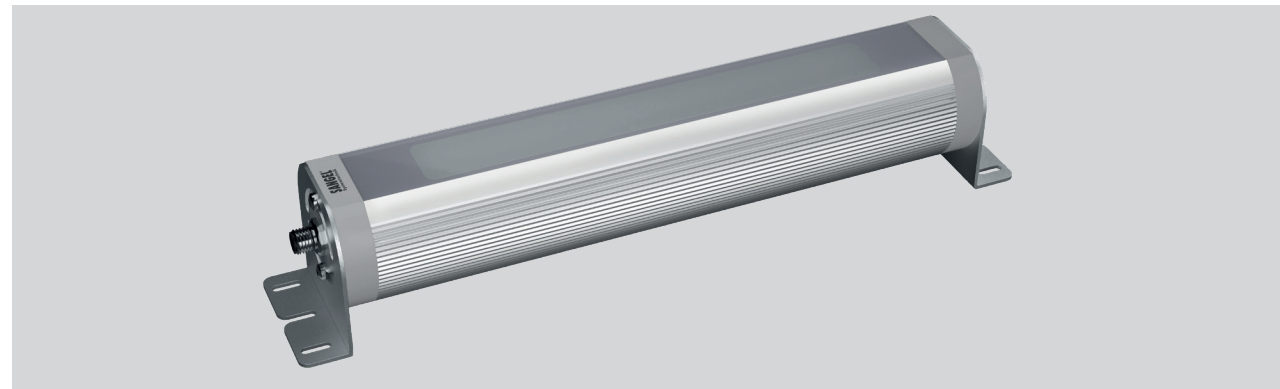


# LED Aufbauleuchte LR70 370

## LED surface mtd. luminaire LR70 370

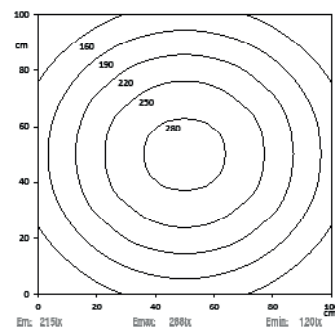
LED Maschinenleuchte in Linienform mit 24V Betriebsspannung  
LED machine luminaire line shaped with 24V operating voltage.



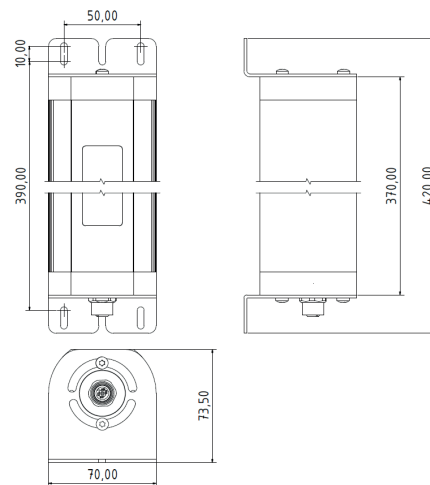
### Lichtverteilung | Light distribution

Lichtpunkthöhe | Metering distance: 100cm

LED LR70 370



### Dimensionierung | Dimension



### Technische Daten | Technical data

Leistung: 8,5W  
Power: 8,5W

Anschlusswert: 24V DC (-10%/+15%)  
Connection value: 24V DC (-10%/+15%)

Anschluss: Steckverbinder M12 5pol. A codiert  
Connection type: connector M12 5pol. A coded

Gehäuse: Aluminium eloxiert  
Housing: anodized aluminium

Schutzart: IP67  
Protection rating: IP67

Schutzklasse: III  
Protection class: III

Abdeckung: PMMA oder ESGd diffus  
Cover: safety glass or PMMA diffuse

Farbtreue: Ra / CRI ≥ 80  
Color rendering: Ra / CRI ≥ 80

Lebensdauer: min. 60 000h  
Durability: min. 60 000h

Max. Umgebungstemperatur: -20°C / +45°C  
Max. ambient temperature: -20°C / +45°C

Optik: 120° Optik  
Optics: 120° optics

Belegung: 1 = DC (+) br | br  
Pin assignment: 2 = Eco (DC+) ws | wh  
3 = DC (-) bl | bl  
4 = NC  
5 = NC

### Normen / Approbationen

Standards / Approvals  
DIN EN 55015 (EMV)  
DIN EN 61547 (EMV)  
DIN EN 60598-1  
DIN EN 62471



Nomenklatur Nomenclature	Katalognr. Catalogue no.	Abdeckung Cover	Optik Optics	Lichtstrom Luminous flux	Lichttemperatur Light temp.
-----------------------------	-----------------------------	--------------------	-----------------	-----------------------------	--------------------------------

### Drehbare Halterung | Turnable mounting

LED LR70 370 PMMA-d-0-M12-57	15070624	PMMA diffus PMMA diffuse	120° Optik 120° optics	ca. 977 lm	5.700K
LED LR70 370 ESGd-0-M12-57	15070625	ESGd diffus safety glass diffuse	120° Optik 120° optics	ca. 977 lm	5.700K
LED LR70 370 PMMA-d-0-M12-40	15070628	PMMA diffus PMMA diffuse	120° Optik 120° optics	ca. 977 lm	4.000K
LED LR70 370 ESGd-0-M12-40	15070629	ESGd diffus safety glass diffuse	120° Optik 120° optics	ca. 977 lm	4.000K
LED LR70 370 ESGd-30-M12-57	15070663	ESGd diffus safety glass diffuse	30° Optik 30° optics	ca. 977 lm	5.700K
LED LR70 370 ESGd-30-M12-40	15070665	ESGd diffus safety glass diffuse	30° Optik 30° optics	ca. 977 lm	4.000K
LED LR70 370 ESGd-60-M12-57	15070667	ESGd diffus safety glass diffuse	60° Optik 60° optics	ca. 977 lm	5.700K
LED LR70 370 ESGd-60-M12-40	15070669	ESGd diffus safety glass diffuse	60° Optik 60° optics	ca. 977 lm	4.000K

### Drehbare Halterung mit zweitem Flansch zum Durchschleifen | Turnable mounting with second flange for loop through

LED LR70 370 PMMA-d-0-M12D-57	15070766	PMMA diffus PMMA diffuse	120° Optik 120° optics	ca. 977 lm	5.700K
LED LR70 370 ESGd-0-M12D-57	15070730	ESGd diffus safety glass diffuse	120° Optik 120° optics	ca. 977 lm	5.700K
LED LR70 370 PMMA-d-0-M12D-40	15070768	PMMA diffus PMMA diffuse	120° Optik 120° optics	ca. 977 lm	4.000K
LED LR70 370 ESGd-0-M12D-40	15070769	ESGd diffus safety glass diffuse	120° Optik 120° optics	ca. 977 lm	4.000K
LED LR70 370 ESGd-30-M12D-57	15070786	ESGd diffus safety glass diffuse	30° Optik 30° optics	ca. 977 lm	5.700K
LED LR70 370 ESGd-60-M12D-57	15070787	ESGd diffus safety glass diffuse	60° Optik 60° optics	ca. 977 lm	5.700K
LED LR70 370 ESGd-30-M12D-40	15070788	ESGd diffus safety glass diffuse	30° Optik 30° optics	ca. 977 lm	4.000K
LED LR70 370 ESGd-60-M12D-40	15070789	ESGd diffus safety glass diffuse	60° Optik 60° optics	ca. 977 lm	4.000K

Ihr Lieferant



webshop: [www.evg.de](http://www.evg.de)  
info@evg.de  
+49 2166 5508-0

REV.1,  
23.08.21

**SANGEL**  
Systemtechnik  
[www.sangel.com](http://www.sangel.com)

Technische Änderungen vorbehalten. Lichtstrom und Lichtfarbe können variieren.  
Subject to technical changes. The luminous flux and colour temperature may vary.

**SANGEL**  
Systemtechnik  
[www.sangel.com](http://www.sangel.com)