

TECHNISCHE DATEN:

Aufbau

Dichtring / Außenteil Polychloropren-Nitrilkautschuk CR/NBR
 Dichtring / Innenteil TPE TPS

Eigenschaften

- Reduzier-Dichtring für kleine Kabel

Temperaturbereich -20 °C / +100 °C

Hinweis montiert in den PERFECT Serien:
 50.6xx M/R, 50.6xx PA/Rzzzz

TECHNICAL DATA:

Configuration

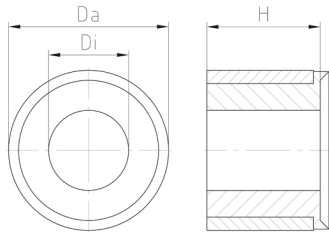
Sealing ring/outer part Polychloroprene-Nitrile rubber CR/NBR
 Sealing ring/inner part TPE TPS

Properties

- reducing sealing ring for small cable-diameter

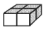
Temperature range -20 °C / +100 °C

Comment assembled in PERFECT series:
 50.6xx M/R, 50.6xx PA/Rzzzz



Merkmale

Characteristics

| Größe / Size | H | Da | Di |  | Art.-Nr. / Part No. |
|--------------|------|------|----|---|---------------------|
| xx | mm | mm | mm | | |
| M12 | 6,5 | 8,2 | 5 | 100 | WJ-DM 12-2* |
| M16 | 8,5 | 11,8 | 6 | 100 | WJ-RDM 16/T |
| M16 | 8,5 | 12 | 6 | 100 | WJ-RDM 16-1/T |
| M20 | 8,5 | 15,5 | 8 | 100 | WJ-RDM 20/T |
| M25 | 10 | 20 | 12 | 50 | WJ-RDM 25/T |
| M32 | 13,5 | 25 | 16 | 25 | WJ-RDM 32/T |
| M40 | 16 | 33,2 | 21 | 10 | WJ-RDM 40-1/T |
| M50 | 17,5 | 41 | 27 | 5 | WJ-RDM 50/T |
| M63 | 19 | 54 | 34 | 5 | WJ-RDM 63-0/T |

* Dichtring einteilig und nur für 50.612 M/R

* Sealing ring one-piece and only for 50.612 M/R