

Han Modular Twin angled housing

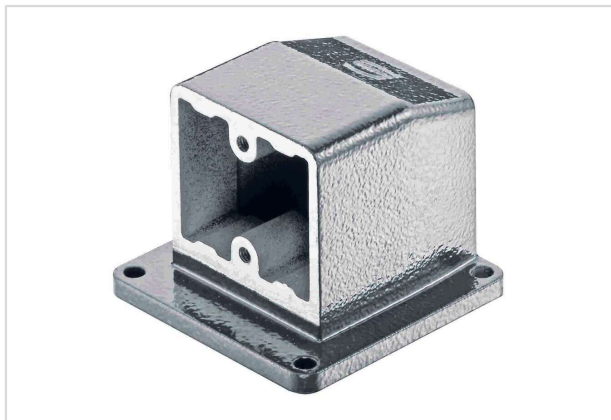


Image is for illustration purposes only. Please refer to product description.

Part number	09 14 002 0950
Specification	Han Modular Twin angled housing
HARTING eCatalogue	https://b2b.harting.com/09140020950

Identification

Category	Hoods/Housings
Series of hoods/housings	Han-Modular® Twin
Type of hood/housing	Angled housing

Version

Size	Modular Twin
Locking type	Single locking lever
Details	Rated voltage ≤ 630 V Rated impulse voltage ≤ 6 kV Pollution degree 3 For a complete connector the specified voltage rating is the maximum level which can be achieved. In cases where the used module(s) do offer lower voltage ratings, then these lower ratings are valid. Higher voltage ratings in individual applications can be approved in coordination with HARTING.

Technical characteristics

Limiting temperature	-40 ... +125 °C
Note on the limiting temperature	For use as a connector according to IEC 61984.
Degree of protection acc. to IEC 60529	IP65

Material properties

Material (hood/housing)	Zinc die-cast
Surface (hood/housing)	Powder-coated
Colour (hood/housing)	RAL 7037 (dust grey)
RoHS	compliant



Pushing Performance
Since 1945

Material properties

ELV status	compliant
China RoHS	e
REACH Annex XVII substances	Not contained
REACH ANNEX XIV substances	Not contained
REACH SVHC substances	Not contained
California Proposition 65 substances	Yes
California Proposition 65 substances	Lead Nickel

Specifications and approvals

Specifications	IEC 61984
Approvals	CE

Commercial data

Packaging size	1
Net weight	210 g
Country of origin	China
European customs tariff number	85389099
GTIN	5713140182066
ETIM	EC000437
eCl@ss	27440202 Shell for industrial connectors