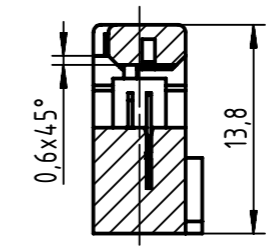


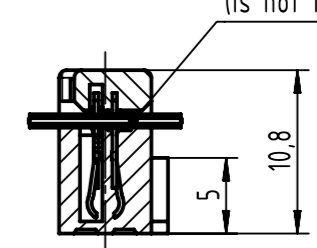
pre-assembled

A-A



assembled

B-B



coding style table

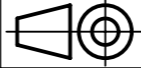
	style A: for connectors 6-pole
	style B: for connectors from 10 to 14-pole
	style C: for connectors from 16 to 64-pole

full range of P/N's and dimensions shown on page 2/2

further information see product data sheet

	All rights reserved Department EL PD	Created by TADJE	Inspected by STORCK	Standardisation HOFFMANN	Date 2020-05-05	State Final Release	Ref. Sub.
	HARTING Electronics GmbH D-32339 Espelkamp	Title SEK 18 female connector with open end cover			Doc-Key / ECM-Nr. 100662934/UGD/001/C 500000172195		Rev. C
		Type TB	Number 09185XXX803		Page 1/2		

1	2		3	4	5		6	7	8				
A	performance level										A		
	PL3	PL2		S4 (NM30)	insulator colour	remark	quantity	dimensions				B	
	part number	part number		part number				A max.	B	C			D
no. of contacts	part number	part number		part number	grey	-		12,2	2 x 2,54 (=5,08)	2	7,62	C	
B	06	09 18 506 7803	09 18 506 6803		09 18 506 5803	grey	-		17,3	4 x 2,54 (=10,16)	3,8	12,7	D
	10	09 18 510 7803	09 18 510 6803		09 18 510 5803			22,4	6 x 2,54 (=15,24)	3,8	17,78		
	14	09 18 514 7803	09 18 514 6803		09 18 514 5803			24,9	7 x 2,54 (=17,78)	3,8	20,32		
	16	09 18 516 7803	09 18 516 6803		09 18 516 5803			30	9 x 2,54 (=22,86)	3,8	25,4		
	20	09 18 520 7803	09 18 520 6803		09 18 520 5803			37,6	12 x 2,54 (=30,48)	3,8	33,02		
	26	09 18 526 7803	09 18 526 6803		09 18 526 5803			42,7	14 x 2,54 (=35,56)	3,8	38,50		
	30	09 18 530 7803	09 18 530 6803		09 18 530 5803			47,8	16 x 2,54 (=40,64)	3,8	43,18		
	34	09 18 534 7803	09 18 534 6803		09 18 534 5803			55,4	19 x 2,54 (=48,26)	3,8	50,8		
	40	09 18 540 7803	09 18 540 6803		09 18 540 5803			68,1	24 x 2,54 (=60,96)	3,8	63,5		
	50	09 18 550 7803	09 18 550 6803		09 18 550 5803			80,8	29 x 2,54 (=73,66)	3,8	76,6		
	60	09 18 560 7803	09 18 560 6803		09 18 560 5803			85,9	31 x 2,54 (=78,74)	3,8	81,28		
	64	09 18 564 7803	09 18 564 6803		09 18 564 5803			black	-		12,2	2 x 2,54 (=5,08)	
06	09 18 506 7803 001	09 18 506 6803 001		09 18 506 5803 001	17,3	4 x 2,54 (=10,16)	3,8			12,7			
10	09 18 510 7803 001	09 18 510 6803 001		09 18 510 5803 001	22,4	6 x 2,54 (=15,24)	3,8			17,78			
14	09 18 514 7803 001	09 18 514 6803 001		09 18 514 5803 001	24,9	7 x 2,54 (=17,78)	3,8			20,32			
16	09 18 516 7803 001	09 18 516 6803 001		09 18 516 5803 001	30	9 x 2,54 (=22,86)	3,8			25,4			
20	09 18 520 7803 001	09 18 520 6803 001		09 18 520 5803 001	37,6	12 x 2,54 (=30,48)	3,8			33,02			
26	09 18 526 7803 001	09 18 526 6803 001		09 18 526 5803 001	42,7	14 x 2,54 (=35,56)	3,8			38,50			
30	09 18 530 7803 001	09 18 530 6803 001		09 18 530 5803 001	47,8	16 x 2,54 (=40,64)	3,8			43,18			
34	09 18 534 7803 001	09 18 534 6803 001		09 18 534 5803 001	55,4	19 x 2,54 (=48,26)	3,8			50,8			
40	09 18 540 7803 001	09 18 540 6803 001		09 18 540 5803 001	68,1	24 x 2,54 (=60,96)	3,8			63,5			
50	09 18 550 7803 001	09 18 550 6803 001		09 18 550 5803 001	80,8	29 x 2,54 (=73,66)	3,8			76,6			
60	09 18 560 7803 001	09 18 560 6803 001		09 18 560 5803 001	85,9	31 x 2,54 (=78,74)	3,8			81,28			
E	06	09 18 506 7803 58U	09 18 506 6803 58U		09 18 506 5803 58U	grey	bulk packaging	5000 pieces	12,2	2 x 2,54 (=5,08)	2	7,62	F
	10	09 18 510 7803 58U	09 18 510 6803 58U		09 18 510 5803 58U			5000 pieces	17,3	4 x 2,54 (=10,16)	3,8	12,7	
	14	09 18 514 7803 58U	09 18 514 6803 58U		09 18 514 5803 58U			5000 pieces	22,4	6 x 2,54 (=15,24)	3,8	17,78	
	16	09 18 516 7803 58U	09 18 516 6803 58U		09 18 516 5803 58U			5000 pieces	24,9	7 x 2,54 (=17,78)	3,8	20,32	
	20	09 18 520 7803 58U	09 18 520 6803 58U		09 18 520 5803 58U			5000 pieces	30	9 x 2,54 (=22,86)	3,8	25,4	
	26	09 18 526 7803 58U	09 18 526 6803 58U		09 18 526 5803 58U			5000 pieces	37,6	12 x 2,54 (=30,48)	3,8	33,02	
	30	09 18 530 7803 58U	09 18 530 6803 58U		09 18 530 5803 58U			5000 pieces	42,7	14 x 2,54 (=35,56)	3,8	38,50	
	34	09 18 534 7803 58U	09 18 534 6803 58U		09 18 534 5803 58U			3000 pieces	47,8	16 x 2,54 (=40,64)	3,8	43,18	
	40	09 18 540 7803 58U	09 18 540 6803 58U		09 18 540 5803 58U			3000 pieces	55,4	19 x 2,54 (=48,26)	3,8	50,8	

		All Dimensions in mm Original Size DIN A3		Scale 1:1		Free size tol.		Ref.	
All rights reserved		Created by TADJE		Inspected by STORCK		Standardisation HOFFMANN		Date 2020-05-05	
Department EL PD		Title SEK 18 female connector with open end cover		State Final Release		Doc-Key / ECM-Nr. 100662934/UGD/001/C 500000172195		Rev. C	
HARTING Electronics GmbH D-32339 Espelkamp		Type TB		Number 09185XXX803		Page 2/2			