

Han 3HvES-F

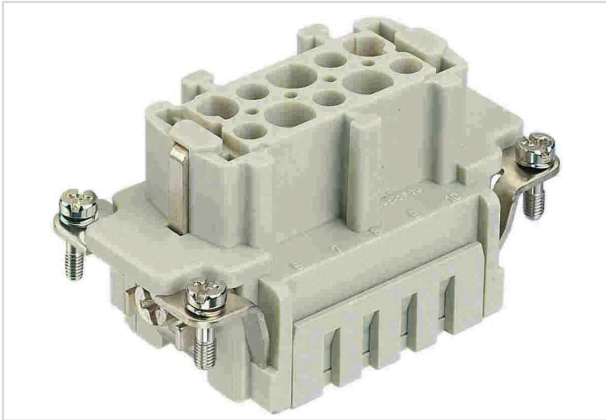


Image is for illustration purposes only. Please refer to product description.

Part number	09 34 003 2716
Specification	Han 3HvES-F
HARTING eCatalogue	https://b2b.harting.com/09340032716

Identification

Category	Inserts
Series	Han [®] Hv ES

Version

Termination method	Cage-clamp termination
Gender	Female
Size	10 B
Number of contacts	5
Number of power contacts	3
Number of special contacts	2
Specification of special contacts	Relay contact
PE contact	Yes
Details	Not mating compatible to Han Hv E [®] screw/crimp termination

Technical characteristics

Conductor cross-section	0.14 ... 2.5 mm ²
Conductor cross-section	AWG 26 ... AWG 14
Rated current	16 A
Rated voltage	830 V
Rated impulse voltage	8 kV
Pollution degree	3
Rated voltage acc. to UL	600 V
Rated voltage acc. to CSA	600 V

Technical characteristics

Insulation resistance	$>10^{10} \Omega$
Contact resistance	$\leq 3 \text{ m}\Omega$
Stripping length	7 ... 9 mm
Limiting temperature	-40 ... +125 °C
Mating cycles	≥ 500

Material properties

Material (insert)	Polycarbonate (PC)
Colour (insert)	RAL 7032 (pebble grey)
Material (contacts)	Copper alloy
Surface (contacts)	Silver plated
Material flammability class acc. to UL 94	V-0
RoHS	compliant with exemption
RoHS exemptions	6(c): Copper alloy containing up to 4 % lead by weight
ELV status	compliant with exemption
China RoHS	50
REACH Annex XVII substances	Not contained
REACH ANNEX XIV substances	Not contained
REACH SVHC substances	Yes
REACH SVHC substances	Potassium 1,1,2,2,3,3,4,4,4-nonafluorobutane-1-sulphonate Lead
ECHA SCIP number	1e38d35d-d1be-4585-8e03-95faccd739bf
California Proposition 65 substances	Yes
California Proposition 65 substances	Lead Nickel
Fire protection on railway vehicles	EN 45545-2 (2020-08)
Requirement set with Hazard Levels	R26

Specifications and approvals

Specifications	IEC 60664-1 IEC 61984
UL / CSA	UL 1977 ECBT2.E235076

Commercial data

Packaging size	1
----------------	---



Pushing Performance
Since 1945

Commercial data

Net weight	40 g
Country of origin	Germany
European customs tariff number	85366990
GTIN	5713140053038
ETIM	EC000438
eCl@ss	27440205 Contact insert for industrial connectors