

## Han K 3/0 Pos. male Insert Screw Term.

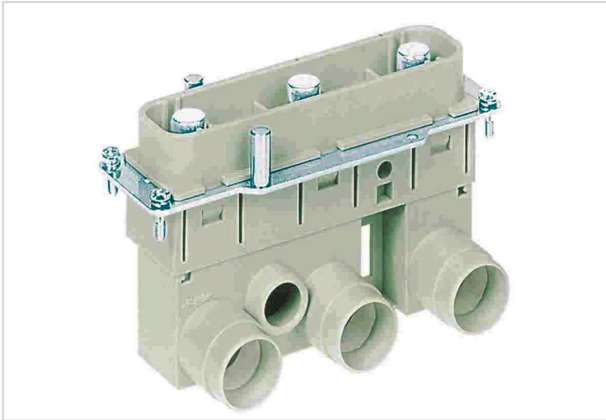


Image is for illustration purposes only. Please refer to product description.

Part number	09 38 005 2622
Specification	Han K 3/0 Pos. male Insert Screw Term.
HARTING eCatalogue	<a href="https://b2b.harting.com/09380052622">https://b2b.harting.com/09380052622</a>

### Identification

Category	Inserts
Series	Han-Com <sup>®</sup>
Identification	Han <sup>®</sup> K 3/0
Specification	Angled

### Version

Termination method	Axial screw termination
Gender	Male
Size	24 B
Number of contacts	3

### Technical characteristics

Conductor cross-section	35 ... 70 mm <sup>2</sup>
Rated current	200 A
Rated voltage conductor-earth	1,150 V
Rated voltage conductor-conductor	2,000 V
Rated impulse voltage	8 kV
Pollution degree	3
Rated current acc. to UL	200 A
Rated voltage acc. to UL	600 V
Rated current acc. to CSA	160 A
Rated voltage acc. to CSA	600 V
Insulation resistance	>10 <sup>10</sup> Ω



Pushing Performance  
Since 1945

## Technical characteristics

Contact resistance	≤0.2 mΩ
Stripping length	22 mm
Tightening torque	8 Nm @ 35 mm <sup>2</sup> 9 Nm @ 50 mm <sup>2</sup> 10 Nm @ 70 mm <sup>2</sup>
Limiting temperature	-40 ... +125 °C
Mating cycles	≥500

## Material properties

Material (insert)	Polycarbonate (PC)
Colour (insert)	RAL 7032 (pebble grey)
Material (contacts)	Copper alloy
Surface (contacts)	Silver plated
Material flammability class acc. to UL 94	V-0
RoHS	compliant with exemption
RoHS exemptions	6(c): Copper alloy containing up to 4 % lead by weight
ELV status	compliant with exemption
China RoHS	50
REACH Annex XVII substances	Not contained
REACH ANNEX XIV substances	Not contained
REACH SVHC substances	Yes
REACH SVHC substances	Lead
ECHA SCIP number	5dbb3851-b94e-4e88-97a1-571845975242
California Proposition 65 substances	Yes
California Proposition 65 substances	Lead Nickel
Fire protection on railway vehicles	EN 45545-2 (2020-08)
Requirement set with Hazard Levels	R22 (HL 1-3) R23 (HL 1-3)

## Specifications and approvals

Specifications	IEC 60664-1 IEC 61984
UL / CSA	UL 1977 ECBT2.E235076 CSA-C22.2 No. 182.3 ECBT8.E235076



**Pushing Performance**  
Since 1945

## Specifications and approvals

Approvals	DNV GL
-----------	--------

## Commercial data

Packaging size	1
Net weight	402.06 g
Country of origin	Romania
European customs tariff number	85366990
GTIN	5713140056169
ETIM	EC000438
eCl@ss	27440205 Contact insert for industrial connectors