

## Han 6 HPR Base Panel Screw locking

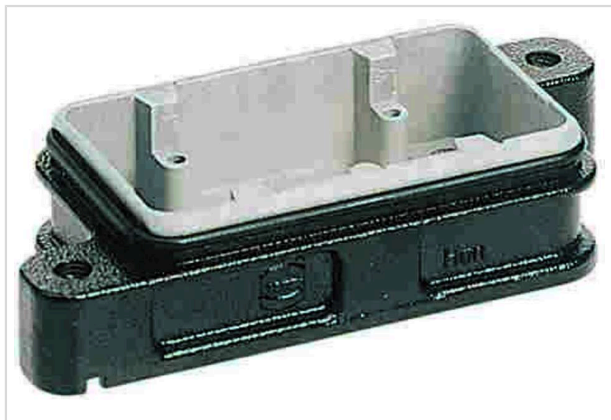


Image is for illustration purposes only. Please refer to product description.

|                    |   |
|--------------------|---|
| Part number        | 09 40 006 0311  |
| Specification      | Han 6 HPR Base Panel Screw locking  |
| HARTING eCatalogue | <a href="https://b2b.harting.com/09400060311">https://b2b.harting.com/09400060311</a> |

### Identification

|                          |                          |
|--------------------------|--------------------------|
| Category                 | Hoods/Housings           |
| Series of hoods/housings | Han <sup>®</sup> HPR     |
| Type of hood/housing     | Bulkhead mounted housing |

### Version

|                      |   |
|----------------------|---|
| Size                 | 6 B   |
| Locking type         | Screw locking                                 |
| Field of application | Hoods/housings for harsh outdoor environments |

### Technical characteristics

|  |  |
|--|--|
| Tightening torque (screw locking)      | 4 Nm   |
| Limiting temperature                   | -40 ... +125 °C                                |
| Note on the limiting temperature       | For use as a connector according to IEC 61984. |
| Degree of protection acc. to IEC 60529 | IP65<br>IP68<br>IP69 / IPX9K acc. to ISO 20653 |
| Type rating acc. to UL 50 / UL 50E     | 4<br>4X<br>12                                  |

### Material properties

|                         |   |
|-------------------------|---|
| Material (hood/housing) | Aluminium die-cast<br>Corrosion resistant |
| Surface (hood/housing)  | Powder-coated                             |
| Colour (hood/housing)   | RAL 9005 (jet black)                      |



Pushing Performance  
Since 1945

## Material properties

|                                      |                            |
|--------------------------------------|----------------------------|
| Material (seal)                      | NBR                        |
| RoHS                                 | compliant                  |
| ELV status                           | compliant                  |
| China RoHS                           | e                          |
| REACH Annex XVII substances          | Not contained              |
| REACH ANNEX XIV substances           | Not contained              |
| REACH SVHC substances                | Not contained              |
| California Proposition 65 substances | Yes                        |
| California Proposition 65 substances | Nickel<br>Naphthalene      |
| Fire protection on railway vehicles  | EN 45545-2 (2020-08)       |
| Requirement set with Hazard Levels   | R1 (HL 1-3)<br>R7 (HL 1-3) |

## Specifications and approvals

|           |  |
|-----------|--|
| UL / CSA  | UL 1977 ECBT2.E235076<br>CSA-C22.2 No. 182.3 ECBT8.E235076 |
| Approvals | CE<br>DNV GL   |

## Commercial data

|                                |  |
|--------------------------------|--|
| Packaging size                 | 1  |
| Net weight                     | 140 g                                    |
| Country of origin              | Germany                                  |
| European customs tariff number | 85389099                                 |
| GTIN                           | 5713140057180                            |
| ETIM                           | EC000437                                 |
| eCl@ss                         | 27440202 Shell for industrial connectors |