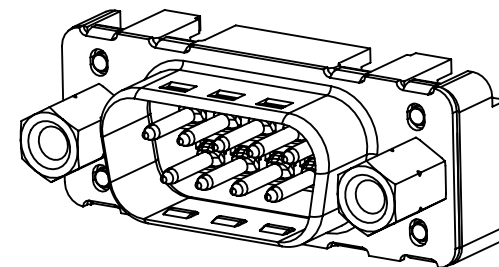
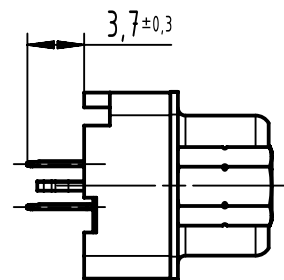
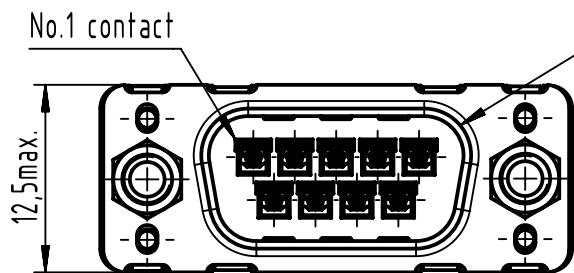
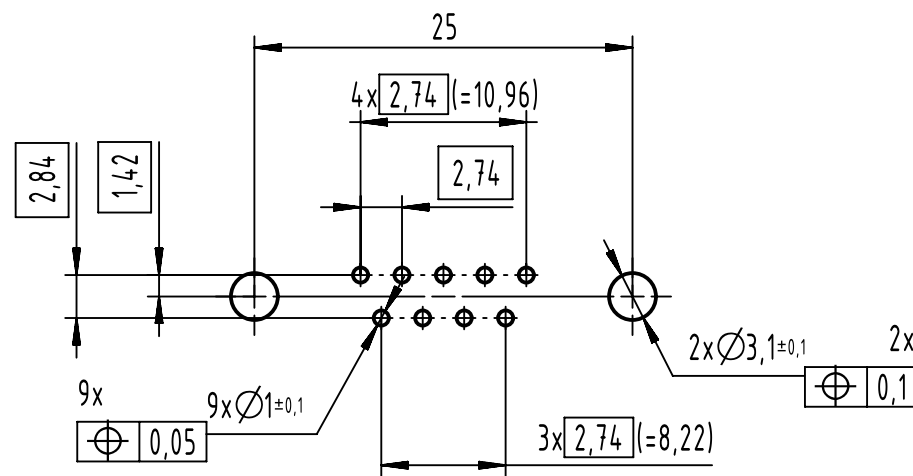
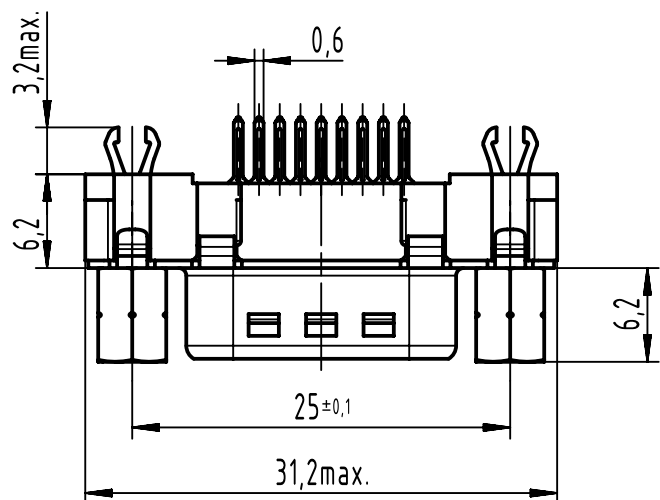


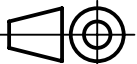


Mating face according to : MIL-C-24308/ DIN 41652/ CECC 75301-802



PCB layout component side



Connector retention and insertion forces on PC-Board: 25 N / 80 N

09651613733	M3	PL1	 All Dimensions in mm Original Size DIN A4	Scale 2:1	Free size tol.			Ref.	
09651616733	M3	PL2		 All rights reserved Department EL PD	Created by ZHUANGJ	Inspected by LUOK	Standardisation ROEBEN	Date 2023-09-19	State Final Release
09651617733	M3	PL3			Title D-Sub 9-Pole Male Straight			Doc-Key / ECM-Nr. 100593487/UGD/000/B 500000253633	
09651613713	4-4UNC	PL1	 HARTING D-32339 Espelkamp	Type TB	Number 0965161X7X3			Rev. B	Page 1/1
09651616713	4-4UNC	PL2							
09651617713	4-4UNC	PL3							
Part number	Screw lock thread	Performance level							