

DSUB SV FE SSDP ANG73-254 09P PL2 NUT 4-

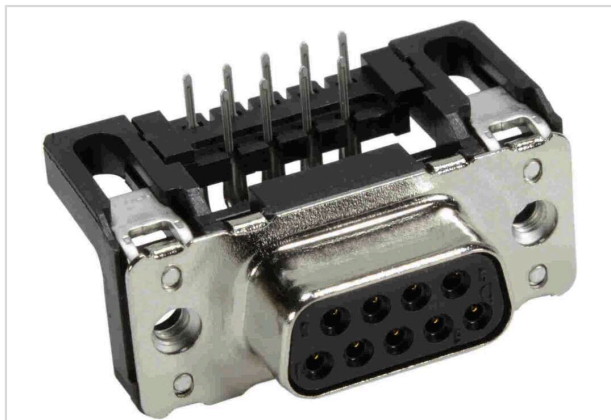


Image is for illustration purposes only. Please refer to product description.

Part number	09 66 112 6602
Specification	DSUB SV FE SSDP ANG73-254 09P PL2 NUT 4-
HARTING eCatalogue	https://b2b.harting.com/09661126602

Identification

Category	Connectors
Series	D-Sub
Identification	Standard
Element	Connector
Description of the contact	Stamped Angled

Version

Termination method	Wave soldering termination
Gender	Female
Size	D-Sub 1
Connection type	Motherboard to daughtercard
Number of contacts	9
Termination length	2.9 mm
Locking type	Fixing flange with thread 4-40 UNC

Technical characteristics

Distance between rows	2.54 mm
Contact spacing (termination side)	2.74 mm
Rated current	6.5 A
Clearance distance	≥1 mm
Creepage distance	≥1 mm
Insulation resistance	>10 ¹⁰ Ω



Pushing Performance
 Since 1945

Technical characteristics

Contact resistance	≤10 mΩ
Tightening torque	≤0.6 Nm Female screw lock
Limiting temperature	-55 ... +125 °C
Insertion force	≤30 N
Withdrawal force	≥3.3 N ≤20 N
Performance level	2 acc. to CECC 75301-802
Mating cycles	≥250
Test voltage U _{r.m.s.}	1 kV
Isolation group	IIIa (175 ≤ CTI < 400)
PCB thickness	≥1.6 mm
Installation height	7.3 mm
Hot plugging	No

Material properties

Material (insert)	Thermoplastic resin, glass-fibre filled (PBTP) Shell: Plated steel
Colour (insert)	Black
Material (contacts)	Copper alloy
Surface (contacts)	Noble metal over Ni
Material flammability class acc. to UL 94	V-0
RoHS	compliant
ELV status	compliant
China RoHS	e
REACH Annex XVII substances	Not contained
REACH ANNEX XIV substances	Not contained
REACH SVHC substances	Not contained
California Proposition 65 substances	Yes
California Proposition 65 substances	Antimony trioxide Lead Nickel
Fire protection on railway vehicles	EN 45545-2 (2020-08)
Requirement set with Hazard Levels	R26



Pushing Performance
Since 1945

Specifications and approvals

Specifications	DIN 41652
UL / CSA	UL 1977 ECBT2.E102079

Commercial data

Packaging size	100
Net weight	6.56 g
Country of origin	Romania
European customs tariff number	85366990
GTIN	5713140079885
ETIM	EC001136
eCl@ss	27440214 D-Sub coupler