

LED Aufbauleuchte KL 105

LED surface mtd. luminaire KL 105

Kompakte LED Maschinenleuchte mit 24V Betriebsspannung
Compact LED machine luminaire with 24V operating voltage

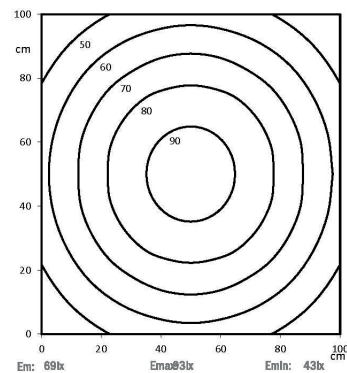


Nomenklatur Nomenclature	Katalognr. Catalogue no.	Abdeckung Cover	Anschluss Connection type	Lichtstrom Luminous flux	Lichtfarbe Light temp.
LED KL 105 PMMAAd-M8-57	15070132	PMMA diffus PMMA diffuse	M8 Steckverbinder M8 connector 4pol.	ca. 402 lm	5.700K
LED KL 105 PMMAAd-M8-40	15070134	PMMA diffus PMMA diffuse	M8 Steckverbinder M8 connector 4pol.	ca. 402 lm	4.000K
LED KL 105 ESGd-M8-57	15070136	ESG diffus safety glass diffuse	M8 Steckverbinder M8 connector 4pol.	ca. 402 lm	5.700K
LED KL 105 ESGd-M8-40	15070138	ESG diffus safety glass diffuse	M8 Steckverbinder M8 connector 4pol.	ca. 402 lm	4.000K

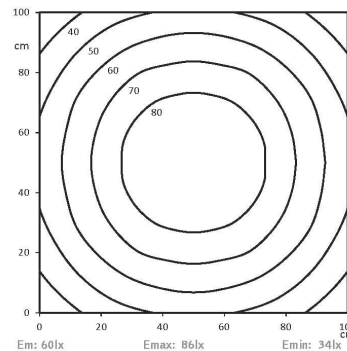
Lichtverteilung | Light distribution

Lichtpunkthöhe | Light source height: 100cm

PMMA diffus | PMMA diffuse

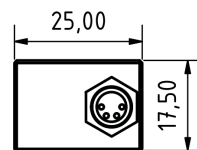
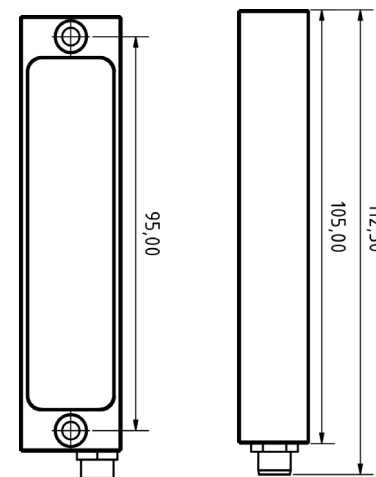


ESG diffus | Single-pane-safety glass diffuse



Dimensionierung | Dimensions

Maximaler Schraubenkopfdurchmesser |
Maximum screw head diameter: \varnothing 7,4 mm



Technische Daten | Technical data

Leistung: 3,1W
Power: 3,1W
Anschlusswert: 24V DC (-10%/+15%)
Connection value: 24V DC (-10%/+15%)
Anschluss: Steckverbinder M8
4pol. A codiert
Connection type: M8 connector
4pol. A coded
Gehäuse: Aluminium eloxiert
Housing: Anodised aluminium
Schutzart: IP67
Protection rating: IP67
Schutzklasse: III
Protection class: III
Abdeckung: PMMA diffus
oder ESG diffus
Cover: PMMA diffuse or
safety glass diffuse
Farbtreue: Ra / CRI \geq 80
Colour rendering: Ra / CRI \geq 80
Lebensdauer: min. 60 000h
Service life: min. 60 000h
Max. Umgebungstemperatur: -20°C / +45°C
Max. ambient temperature: -20°C / +45°C
Optik: 120° Optik
Optics: 120° optics
Belegung: 1 = DC (+) br | br
Pin assignment: 2 = Eco (+) ws | wh
3 = DC (-) bl | bl
4 = NC

Normen / Approbationen Standards / Approvals

DIN EN 55015 (EMV)
DIN EN 61547 (EMV)
DIN EN 60598-1
DIN EN 62471



Ihr Lieferant



webshop: www.evg.de
info@evg.de
+49 2166 5508-0

REV.1,
23.08.21

SANGEL[®]
Systemtechnik
www.sangel.com

Technische Änderungen vorbehalten. Lichtstrom und Lichtfarbe können variieren.
Subject to technical changes. The luminous flux and colour temperature may vary.

SANGEL[®]
Systemtechnik
www.sangel.com