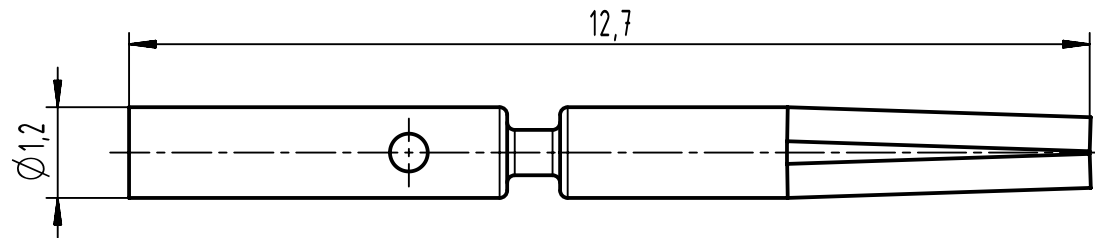
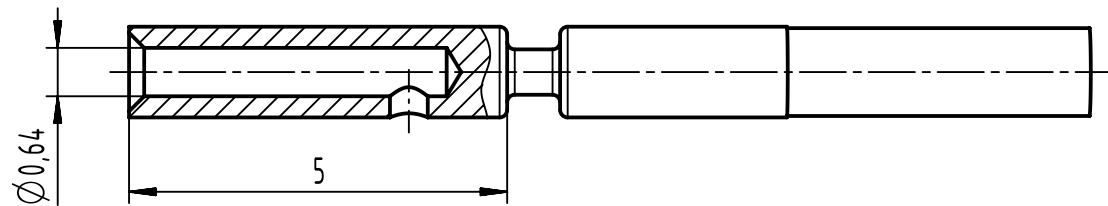


A



B



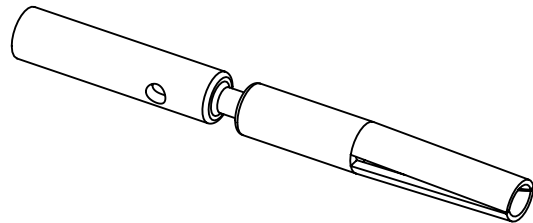
C

this crimp contact should be processed with:


locator 09 99 000 0635

hand crimping tool 09 99 000 0501

Performance Level	PL1
-------------------	-----



D

	All Dimensions in mm Original Size DIN A4		Scale 10:1	Free size tol.		Ref.	
	All rights reserved Department EL PD		Created by HASSE	Inspected by 104.122	Standardisation SAP_WFRT	Sub.	
HARTING D-32339 Espelkamp		Title female contact crimp Ø0,6 AWG 28-24			Date 2022-01-19	State Final Release	
					Type TB	Number 21011009023	Doc-Key / ECM-Nr. 100609016/UGD/002/D 500000210034
						Rev. D	Page 1/1