

HEC

| | |
|----------------------|------------------------|
| Series | 696 |
| Contacts | 4+PE, 8 (4 + 3+PE), 12 |
| Rated current | 32 A – 3A |
| Rated voltage | 600 V – 60 V |
| Degree of protection | IP68, IPX9K |
| Contact plating | Ag (silver) |
| Termination | crimp |



696 HEC Series • Hinged Cover

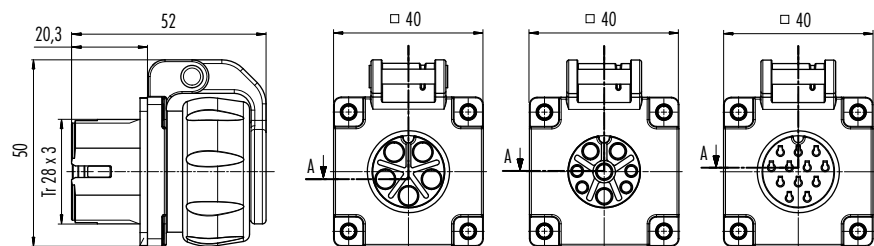
- Compact design: Female panel mount connector with hinged cover
- For all pole numbers (4+PE, 4 + 3+PE, 12)
- Easy and fast assembly
- IP68/IPX9K
- Available from 02/18 on



Description

Female panel mount connector, hinged cover

Drawing



Flat seal enclosed loose

Contacts

| Contacts | Ordering-No. |
|----------|----------------|
| 4+PE | 09 6492 200 05 |
| 4+3+PE | 09 6504 200 08 |
| 12 | 09 6520 200 12 |

Panel cut out see HEC POWER