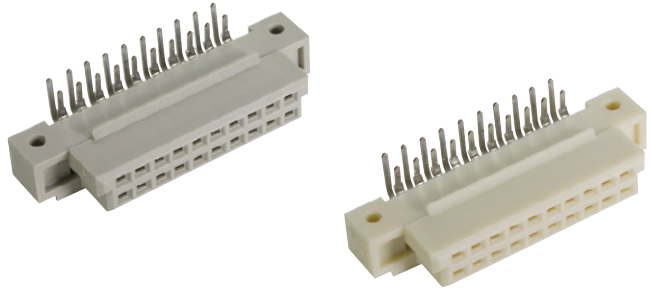


Number of contacts

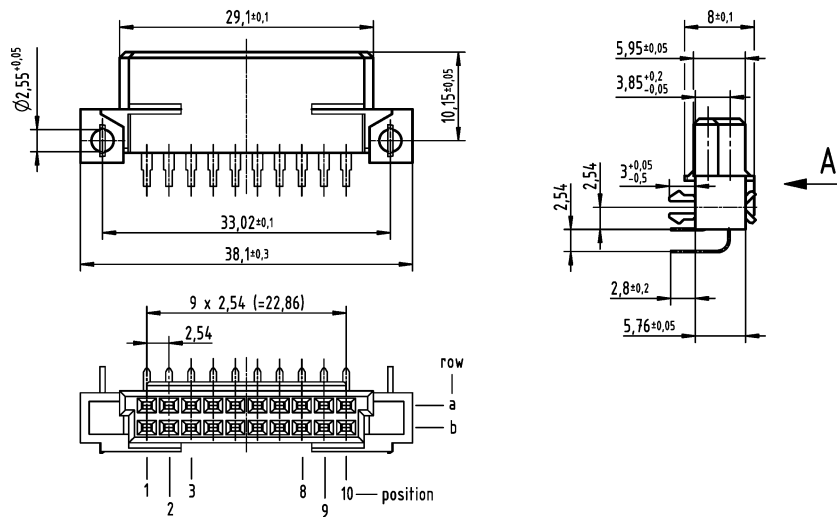
20



Female connectors

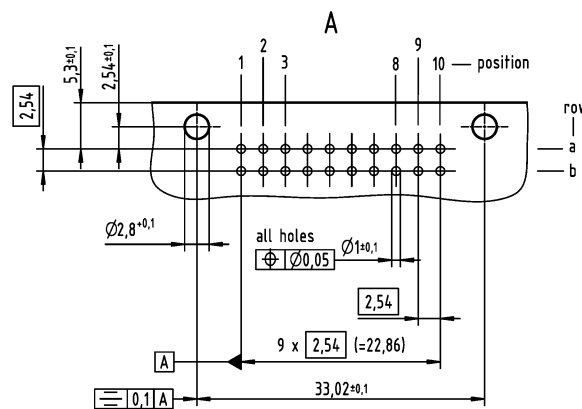
Identification	No. of contacts	Contact arrangement	Part number 3	Performance levels according to IEC 60 603-2.	
				2	1
Female connector with angled solder pins	20		Performance level 3 on request	09 75 220 6801 09 75 420 6801 ^{b)}	Performance level 1 on request
	THR			09 75 220 6804 ^{d)} 09 75 420 6804 ^{b)d)}	
THR on a reel	20			09 75 220 6804 791 ^{d)}	

Dimensions

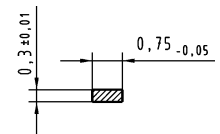


Board drillings

Mounting side



Cross section of solder terminations

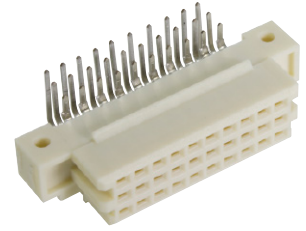


Cross area (A) of contacts row a, b:
A = 0.20 - 0.23 mm²

Dimensions in mm

Number of contacts

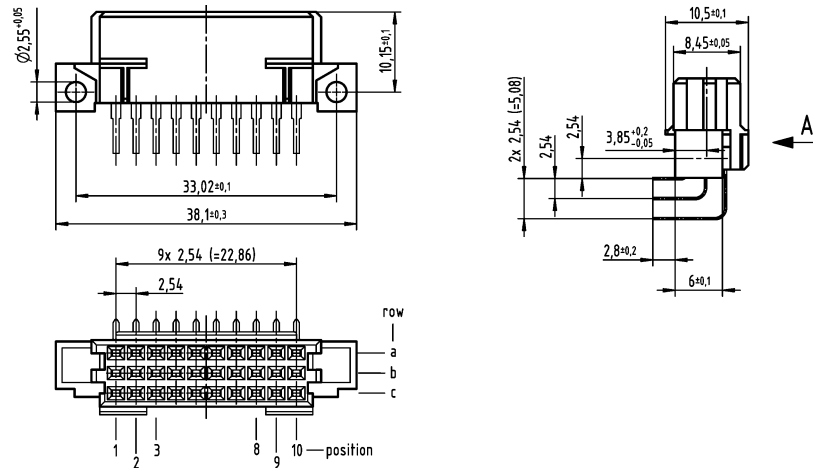
30



Female connectors

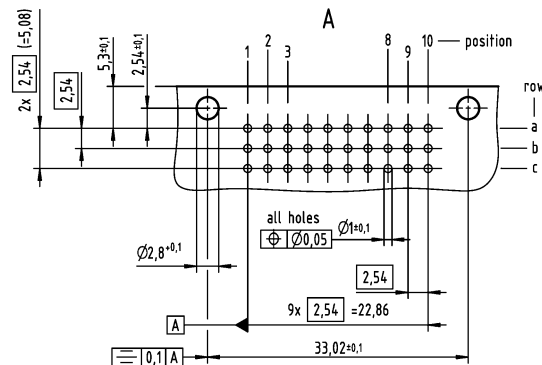
Identification	No. of contacts	Contact arrangement	Part number 3	Performance levels according to IEC 60 603-2.	
				2	1
Female connector with angled solder pins THR THR on a reel	30		Performance level 3 on request	09 29 230 6801 09 29 430 6801 ^{b)}	Performance level 1 on request
	30			09 29 230 6804 ^{d)} 09 29 430 6804 ^{b)d)} 09 29 230 6804 791 ^{d)}	

Dimensions

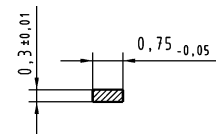


Board drillings

Mounting side



Cross section of solder terminations



Cross area (A) of contacts row a, b, c:
A = 0.20 - 0.23 mm²

Dimensions in mm

Other contact arrangements as well with lagging/leading pins on request

^{b)} Connectors with snap-in clips

^{d)} CTI > 400