

Features

- Han-Modular® docking connector for drawer systems with test position
- Direct panel mounting without hoods and housings
- Solid leading guide pins and bushes
- Suitable for many modules of the Han-Modular® product series.

Notices:

- Please contact your HARTING salesman for support to find your specific combination.
- Due to the plastic material used in the docking frame without PE, the panel will need to be grounded separately.

Technical characteristics

Specifications	DIN EN 60664-1 DIN EN 61984
Frames	
Number of modules	4
Material	
Docking frames	polycarbonate
Float washer	zinc die-cast alloy
Floating tolerance	± 3 mm
Aligning tolerance	± 4 mm
Limiting temperatures	-5 °C ... +55 °C
Flammability acc. to UL 94	V 0
Mechanical working life	≥ 500 mating cycles

System description



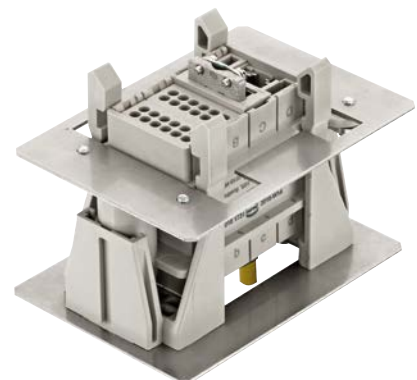
Position unmated

The drawer system and the modules are not mated.



Test position

The drawer system is in the so called test position – the modules are mated.



Working position

The drawer system is pushed completely into the rack – the modules remain mated.



Identification

A ... D

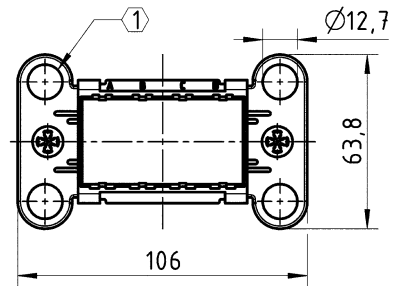
a ... d

Drawings

Dimensions in mm

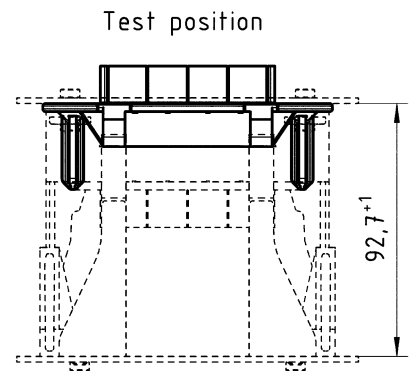
Sliding frames Han® 16 B
floating side (in X and Y axis)

09 14 016 1721



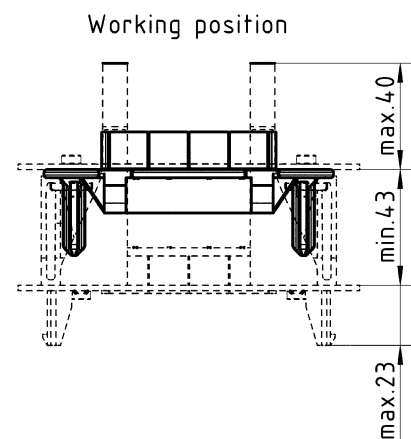
Sliding frames Han® 16 B
movable side (in Z axis)

09 14 016 1731



Rail guide for sliding frames
for movable side

09 14 000 9987



Float washer
for float mounting
of the sliding frame
09 14 016 1721

09 14 000 9986

